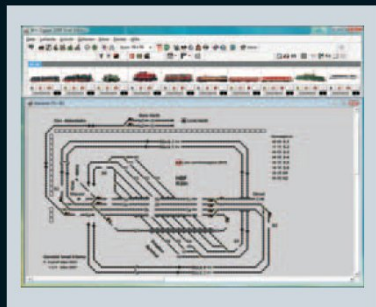
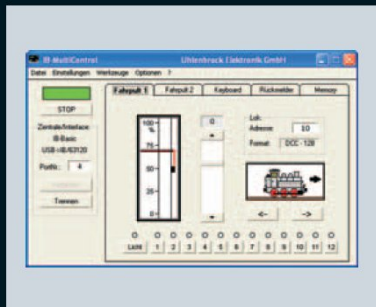


New Items 2010



- IB-Control II
- LED Effect Lighting
- Servo decoder
- Lissy-Creator
- LocoNet IR Receiver
- Reversing Loop Relay
- Power 7
- s88-LocoNet-Adapter
- Feedback Module
- IB-MultiControl
- Win-Digiprt 2009

IB-Control II

The next Generation

IB-Control II



Your center is too distant from the shunting yard?
 You want more Locomotives available permanently?
 You require further Routes?
 You need the IB-Control II!

Great Prospects

The new IB-control II as an additional controller makes a modern control system with convenient operation, from every LocoNet center. It extends each center with two further driving controllers with locomotive selection by locomotive name, that are stored in a data base, a keyboard with symbols for turnouts and signals as well as monitoring possibilities for feedbacks and LISSY receivers and a model clock.

Each IB-control II extends the digital control by 80 routes, which are called by pressing the key pairs or by feedbacks triggered by trains.

With the crystal-clear LCD display and a backlit Keyboard in night Design, model railway fun now really starts with the new IB-control II for all LocoNet Centers.

Functions

- connectable to Intellibox, Intellibox IR, Intellibox basic, Intellibox II, IB-Com, TwinTenter and Piko PowerBox via LocoNet
- up to 128 Speed steps
- up to 9999 Decoder addresses
- Multi-traction
- DirectDrive Function
- Switching of turnouts, signals and routes
- large, highly visible display with back lighting
- detailed representation, therefore easily readable
- Information in the plain language or as symbols
- Night Design, keys with back lighting
- Context sensitive key allocation
- Speed display also in km/h
- up to 32768 switchable special functions for each locomotive
- locomotive database with locomotive name
- locomotive position display in conjunction with LISSY
- a further 80 routes callable by feedback contacts
- Help Function
- Model Clock

Part No 65 410 IB-Control II
Proposed availability starting from October 2010

LED-Effect Lighting

LED Effect Lighting for complete houses or individual windows. Control electronics with four outputs for up to five LEDs. Naturally you can also attach individual lanterns which are equipped with LEDs.

Each output can be separately switched in the DCC/Motorola Digital operations and by a random number generator, a blink generator or a welding light generator. Simple Plug system for connecting the LED boards, in each case populated with one LED, to control electronics.

The LED Effect Lighting is for the lighting of model railway houses, individual office floors or single rooms.

With its high luminosity and thinness the LED Effect Lighting is also well suited for illuminating half relief buildings like those available from JOWI.

The electronics included switch the lights on and off in random pattern in the individual areas.

With the optionally available auxiliary PCBs with red, blue and white LEDs and the integrated effect generator it is possible to reproduce chimney fire and welding light.

Provides meaningful lighting scenes

Also the bluish glow of current TV equipment can be represented for the amateur craftsman who will surely think of many more application possibilities.

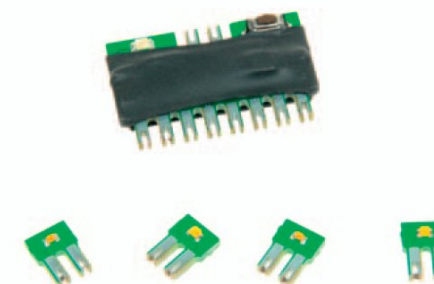
Aluminum foil can be used as a reflector and for additional lighting effects.

Functions

- Control electronics with 4 warm-white LEDs
- for digital and analog operation
- 4 outputs for up to 5 LEDs in each case
- each output is separately digitally controlled by solenoid instruction
- DCC and Motorola
- Random number generator for each output
- Welding light effect
- Flicker lighting for televisions, fires and fire-place
- Blinking light
- Fluorescent lamp simulation
- Flow control for all outputs
- Also switchable with IntelliLight

Previously, lighting lamps in houses and layout scenes was very static. With our modern LED technology you can now light up your scenes realistically.

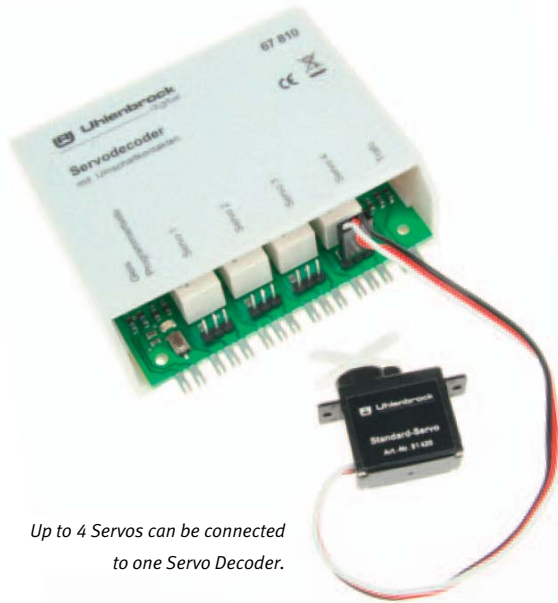
LED-Effect Lighting



- | | |
|-----------------------|--|
| Part No 67 400 | LED-Effect Lighting with 4 LED-circuit boards warm white |
| Part No 67 410 | 4 LED-circuit boards white (flouro-tubes) |
| Part No 67 411 | 4 LED-circuit boards warm white (lamps) |
| Part No 67 412 | 4 LED-circuit boards blue (welding light) |
| Part No 67 413 | 4 LED-circuit boards red (fire) |
- Proposed availability starting from May 2010*



Servo Decoder
LISSY-Creator



Up to 4 Servos can be connected to one Servo Decoder.

Servo Decoder with Switch Output

The RC-modelling Servos can be connected to the new servo decoder and thereby provide the quiet and inexpensive basis for each drive. With it the Model railroader can use the servo drives to set turnouts, signals and boom gates at railroad overpasses, move a water crane or open and close gates. The additional switching outputs can for instance provide polarized power to the frogs of turnouts of up to 7A.

Simple key programming with Motorola and DCC centers can set the address, the end stops and the rotating speed for each servo individually. Use of a DCC Center such as the Intellibox, allows the parameters to be programmed by CV-Programming. That is how the address and end stops are to be set up.

For Connecting 4 Servos

Functions

- Switching exits to heart-polarization-adjustable
- Switching address-adjustable
- finalattack-adjustable
- rotating speed attitude
- over switch keys or by DCC CV-programming
- connection to digital tension
- voltage supply over the track or over a separate Trafo

Part No 67 810 Servo Decoder
Proposed availability starting from April 2010

LISSY-Creator

LISSY Creator is the new PC-program, for simple user friendly and rapid planning of a model railway layout with LISSY and to program all LISSY receivers with the necessary configuration.

The desired automation is designed on the basis of a layout track plan. Whether a shuttle service, holding point, shadow station or switching of locomotive special functions, all automatic controls, of LISSY's capability, can be setup with the LISSY Creator and planned into the layout.

Furthermore the program administers all addresses, that occur on your layout whether solenoid, feedback, LISSY receiver or train categories.

Routes, which are needed for station controls, can likewise be programmed and changed.

The fast Way to a LISSY-controlled Layout

Routes in the Intellibox II and in the Track-Control route memory can also be directly programmed with the LISSY Creator.

All layout data can be saved and printed.

Functions

- LISSY controlled layout planned on PC
- LISSY receiver simply programmed on the layout
- Routes specified on the PC and programmed into the Intellibox II
- Administration of all address data on the layout
- Layout programming saving and printing

Part No 19 300 LISSY-Creator
Proposed availability starting from September 2010



New from LISSY

LocoNet IR-Receiver

With the LocoNet IR-Set Locomotives, turnouts and routes can be controlled wirelessly with any LocoNet Digital Center. Simply connect the LocoNet IR-Receiver with the LocoNet and control everything on the layout with up to four different IRIS hand controllers. With this receiver you also use the IR remote controls IRIS or PIKO Digi-Fern with IB-Basic, IB-Com, DAISY and the ProfiBoss.

IRIS uses four different transmission channels for the controls which can be selected with keys A, B, C or D. Each transmission channel can select a locomotive address to be controlled independently of the others Channels. Furthermore each channel can be assigned different solenoid addresses for each of the keys. The Per channel selected addresses are permanently stored in the LocoNet IR-Receiver and are therefore available again even when the unit is switched off and back on again.

If only one remote control is used then with the help of the channel keys you can quickly select between the control of four locomotives and four groups of four solenoids.

If several remote controls are used each player can control a locomotive by transmitting on a different channel, without affecting the locomotives of the other players, who are operating on the other channels.

The remote control has four different channels and permits operating the layout with four transmitters in the same room.

Not only for IB-Basic and IB-Com

Functions

- IR remote control for locomotives, turnouts and routes
- Direct control of up to 4 desired locomotive
- Address range 1-9999
- Special functions: function and f1 to f12
- Switches turnouts in address range 1-2048
- activates routes that are stored in the Intellibox, the IB-Switch or Intellibox II
- supports all speed step modes (14-128 speed steps)
- with 4 different channels, i.e. 4 transmitters per layout
- two external receivers 66520 with 5m cable can additionally be attached to the LocoNet IR-Receiver.

Part No 63 830 LocoNet IR-Receiver
Proposed availability starting from June 2010

Part No 64 830 LocoNet IR-Set (Transmitter + Receiver)
Proposed availability starting from June 2010

Part No 66 510 IRIS-Transmitter

Part No 66 520 IRIS-Receiver
available now



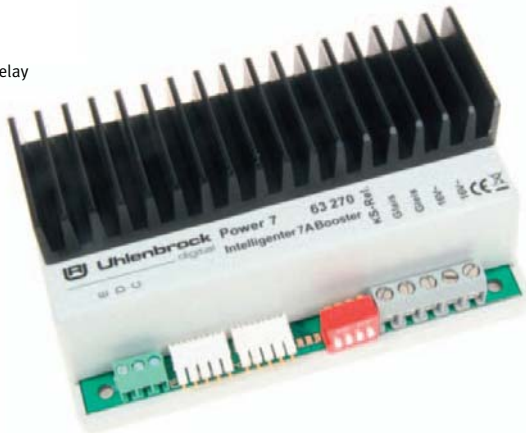
LocoNet IR-Receiver



Operate your model railway layout from all possible and impossible positions - the LocoNet IR-Receiver helps you in that (i.e. even in the adjacent room).

*Where do I take all my power from?
This question is known to every railway
modeller who uses the larger scales.
The solution is called Power 7!
Small, strong, inexpensive and highly
intelligent!*

Power 7
Reversing Loop Relay



Power 7

The LocoNet equipped Power 7 is a high performance multi-protocol booster for scales O-IIm and is suitable for the DCC, Motorola, mfx data formats.

It provides a further 7A output current for the layout. The device's output has short circuit and overload protection.

The Power 7 can be configured with the built-in switches, but you have greater flexibility however when programming the settings via the LocoNet.

If the Power 7 is used in conjunction with an Intellibox II. Error messages are shown in the plain text on the Intellibox display.

In DCC systems the Power 7 can be used as brake generator. Depending upon the preset characteristics of the locomotive decoder brake settings the locomotives will slow and stop in prototypical fashion in the braking section. As many brake section as desired can be connected.

One or more reversing loop relays can be connected to a Power 7.

Reversing Loop Relay

To operate of several reversing loops you can connect several reversing loop relays to a Power 4 or Power 7.

The reversing loops can then also be separately monitored by feedback modules 63320 or 63340.

The intelligent Booster

As power supply we recommend 150 VA-Transformer 20150.

Functions

- genuine multi-protocol booster for DCC, Motorola and mfx data format
- compatible with Centers from Uhlenbrock, Märklin, Fleischmann, Piko, Lenz, ESU, Viessmann and more
- maximum output current 7A
- configurable to DCC brake generator mode
- with reversing loop output
- LocoNet capable, therefore particularly suited for module layouts
- short circuit and overload protection
- connections: LocoNet B, DCC booster, Märklin Booster
- configured by switches and LocoNet CV programming

Part No 63 270 Power 7

Proposed availability starting from Mai 2010

For connecting with Power 4 and Power 7

Part No 61 080 Reversing Loop Relay

Proposed availability starting from April 2010

Feedback modules with Automatic function

Reporting & Switching with one Module

The new feedback modules have the proven quality and working reliability of the past feedback modules 63340 and 63350.

Additionally they have the capability to switch solenoids directly from the feedback module. With this function simple switching tasks can be implemented directly by the feedback module without a route from another device such as Intellibox or IB-Switches. Each track entrance can switch two solenoids when a train enters the attached track section and two further solenoids, when the train leaves the track section. With this automatic function the feedback module can, for example, directly control a railway boom gate, a St Andrews cross or a signal.

2-Rail Feedback Module

- for 8 track sections
- Occupation detectors, feedbacks and power monitoring in one module

Part No 63 320 2-Rail Feedback Module
Proposed availability starting from April 2010

s88-LocoNet Adapter

With the s88-LocoNet Adapter you can connect s88-feedback modules to any LocoNet Digital Center. Simply insert the Adapter between the s88-Bus and LocoNet und all Märklin compatible s88-feedback modules can be used.

The feedbacks from s88-Modules can also be forwarded to a PC and IB-Switch with IB-Basic, IB-Com, DAISY and ProfiBoss. For Centers without a PC connection use the USB-Adapter 63120.

A number of s88-LocoNet Adapters can be employed on one LocoNet to shorten the bus length on the s88-Module side. In this case each s88-LocoNet Adapter is assigned the base

Functions

- Connection via LocoNet
- Select any address in the range 1–2048
- Delay/Response time individually programmable for each output
- programmable with Programming key or the Intellibox programming menu
- each of the inputs can control 2 solenoids, when a train enters the track section or 2 different solenoids when the train leaves the track section

3-Rail Feedback Module

- Occupation detectors for 16 track section, track contacts or keys
- A ground output for connecting reed or contact switches

Part No 63 330 3-Rail Feedback Module
Proposed availability starting from February 2010

For connecting s88-Feedback Modules to the LocoNet

Address of the first s88-Modul in its group.

Functions

- up to 31 Märklin compatible s88-Modules can be connected
- configurable base address for the connected Modules
- operation of a number s88-LocoNet Adapters in one LocoNet is possible

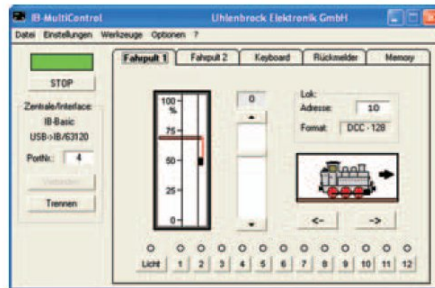
Part No 63 880 s88-LocoNet Adapter
Proposed availability starting from May 2010



Feedback modules
s88-LocoNet Adapter



IB-MultiControl



With the user friendly decoder programming workspace you can easily select and program decoder CVs. They can prepare CV Lists with assignments of manufacturer specific CVs. You can store and recall decoder data from the computer at any time.

The integrated route control with up to 200 routes can be used independently of the Center being used and also functions with the Intellibox Basic, which does not have a built-in route memory.

Two throttle controllers are available.

All turnouts and signals are switched with the Keyboard.

LocoNet and s88 Feedback modules can be monitored and feedbacks can be triggered manually.

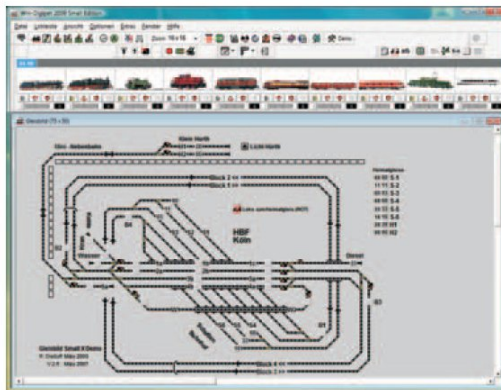
Programming and Controlling software

Functions

- for all Intelliboxes, TwinCenter, PowerBox
- with 2 throttle controls, Keyboard and feedback monitor
- Memory with 200 route
- Routes triggerable via feedback from the train
- User friendly Programming of DCC-Decoders
- With graphically represented speed step curve
- Decoder programming can be saved on the PC
- Your own text lists for manufacturer specific CVs
- all Uhlenbrock DCC und Multiprotocol Decoders loadable as lists

Part No 63 380 s88-LocoNet Adapter
Proposed availability starting from Mai 2010

IB-MultiControl
Win-Digipet 2009



Win-Digipet 2009 small Edition

With Win-Digipet small Edition you can control up to 20 locomotives and 50 solenoids. An update to Win-Digipet 2009 premium Edition can be done at anytime.

Further Information on Win-Digipet from
www.windigipet.de.

Part No 19 900 Win-Digipet 2009 small Edition
available

Complete Catalogue

Our complete 76 page catalogue with all our products, many Tips and advice can be obtained for 3,50 EUR from your local

Technology for Model Railways

Uhlenbrock dealer, sending postage stamps to the value of 5,- EUR directly to us or by ordering online on our internet site.

"Intellibox", "IntelliSound" and "Uhlenbrock Digital" are registered trademarks of Uhlenbrock Elektronik GmbH. All marks mentioned are registered trade names of the appropriate companies. We reserve the right to change information in this folder at any time.

Uhlenbrock Elektronik GmbH
Mercatorstraße 6
D-46244 Bottrop
02045-85830
www.uhlenbrock.de



Your Uhlenbrock Dealer